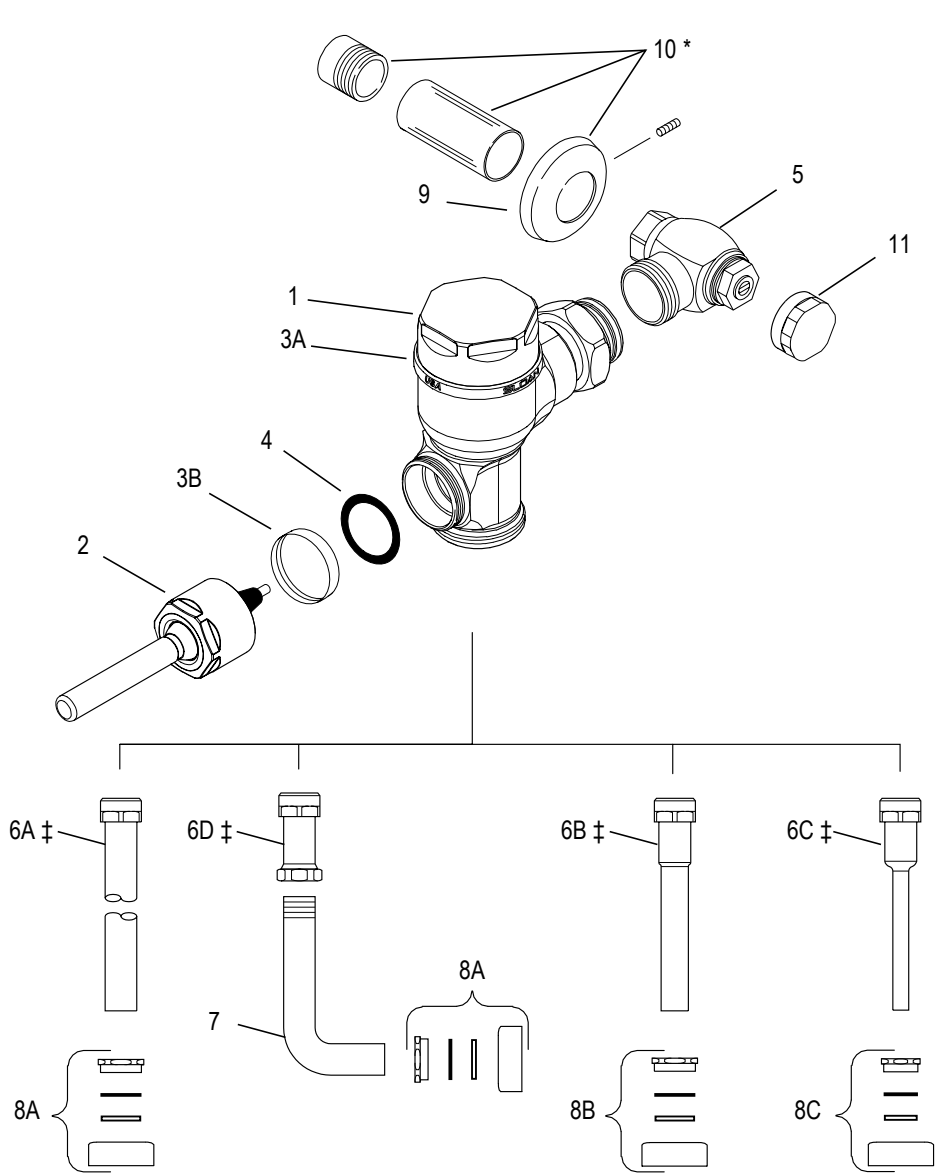


Item No.	Part No.	Description
1	†	Valve Assembly
2	88092625	Handle Assembly
3A	NoLonger Available	PVDPB (Polished Brass) Cover Trim Ring (Crown II only) PVDBN (Brushed Nickel) Cover Trim Ring (Crown II only) PVDSF (Satin Finish) Cover Trim Ring (Crown II only)
3B	NoLonger Available	PVDPB (Polished Brass) Handle Trim Ring (Crown II only) PVDBN (Brushed Nickel) Handle Trim Ring (Crown II only) PVDSF (Satin Finish) Handle Trim Ring (Crown II only)
4	46608, 46071	Handle Gasket — 48 per pkg.
5	88093490	Bak-Chek® Control Stop
6A	48811	1½" x 9" (38 mm x 229 mm) Vacuum Breaker Assembly CP (Model 111)‡
	48813	1½" x 21" (38 mm x 533 mm) Vacuum Breaker Assembly CP (Model 115)‡
	48814	1½" x 24" (38 mm x 610 mm) Vacuum Breaker Assembly CP (Model 116)‡
6B	48808	1¼" x 9" (32 mm x 229 mm) Vacuum Breaker Assembly CP (Model 180)‡
6C	48806	¾" x 9" (19 mm x 229 mm) Vacuum Breaker Assembly CP (Model 186)‡
6D	48800	1½" (38 mm) Vacuum Breaker Assembly CP (Model 120)‡
7	99080608	1½" (38 mm) Elbow Flush Connection CP (Model 120)
8A	99288789	1½" (38 mm) Spud Coupling Assembly (Models 111, 115, 116 & 120)
8B	88095923	1¼" (32 mm) Spud Coupling Assembly (Model 180)
8C	88095929	¾" (19 mm) Spud Coupling Assembly (Model 186)
9	43254/43257	Supply Flange (supplied when valve is not ordered w/ sweat solder kit)
10	48879	1" (25 mm) Sweat Solder Kit & Cast Wall Flange w/ Set Screw YBYC Variation)*
	47793	¾" (19 mm) Sweat Solder Kit & Cast Wall Flange w/ Set Screw (YBYC" Variation)*
11	48855	Locking Vandal Resistant Control Stop Cap CP §
	48854	Locking Vandal Resistant Control Stop Cap CP •
Handle and Cover Trim Ring Kits		
	88093258	CP (Chrome Plate) Handle/Cover Trim Ring Kit
	88093259	PVDPB (Polished Brass) Handle/Cover Trim Ring Kit
	88093261	PVDBN (Brushed Nickel) Handle/Cover Trim Ring Kit
	88093262	PVDSF (Satin Chrome) Handle/Cover Trim Ring Kit
Handle Repair Kit		
	88095928	Handle Repair Kit
Piston Repair Kits		
Please refer to the Sloan Repair and Maintenance Guide or Consult Factory		



- † Part number varies with valve model variation; consult factory.
- ‡ If valve was specified less vacuum breaker ("XYV" Variation), a straight flush tube is supplied in place of the vacuum breaker assembly. Consult Factory for part number.
- § For use w/H-700-A 1" & ¾" and H-600-A 1" Screwdriver Bak-Chek® Control Stops.
- For use w/H-600-A ¾" Screwdriver Bak-Chek® Control Stops.
- * Furnished only when ordered with YBYC variation. For a complete listing of Crown II and Crown Flushometer Valve Components and Repair Kits, refer to Repair Parts and Maintenance Guide or consult your nearest plumbing wholesaler.

Manufactured in the U.S.A. by Sloan Valve Company under one or more of the following patents: U.S. Patents: 5,558,120; 6,460,825; 6,499,716; 6,550,744; 6,616,118; 6,675,827; 5,564,460; 5,730,415; D399,932; D470,222; D494,255; 6,550,744; CROWN II®, CROWN®, BAK-CHEK®.

The information contained in this document is subject to change without notice.

TROUBLESHOOTING GUIDE

1. PROBLEM: Valve does not function.

- CAUSE:** (a.) Control Stop or Main Valve is Closed.
(b.) Handle Assembly is worn.
(c.) Relief Valve is worn and sticking in UP position.

- SOLUTION:** (a.) Open Control Stop or Main Valve.
(b.) Install Sloan Handle Repair Kit (CR-1007) or replace Handle.
(c.) Replace Piston.

2. PROBLEM: Insufficient volume of water to adequately siphon fixture.

- CAUSE:** (a.) Control Stop not open enough.
(b.) Urinal Piston Parts inside a Closet Valve.
(c.) Low Consumption Valve installed on a non-Low Consumption fixture.
(d.) Inadequate volume or pressure at supply.

- SOLUTION:** (a.) Adjust Control Stop for desired delivery of water.
(b.) Replace Piston Parts with proper Closet Piston.
(c.) Replace with proper Flushometer. Crown II and Crown Flushometers are not available with flush volume higher than 1.6 gpf/6.0 Lpf.
(d.) Increase water pressure or supply (flow) to valve. Consult Factory for assistance.

IMPORTANT - LAWS AND REGULATIONS PROHIBIT THE USE OF HIGHER FLUSHING VOLUMES THAN LISTED ON FIXTURE OR FLUSHOMETER.

3. PROBLEM: Length of flush too short (Short Flushing) or Valve closes off immediately.

- CAUSE:** (a.) Piston Assembly is not hand-tight.
(b.) Enlarged Bypass orifice from corrosion or damage.
(c.) Urinal Piston in Closet Flushometer.
(d.) Low Consumption Valve installed on a non-Low Consumption fixture.
(e.) Handle Assembly worn.

- SOLUTION:** (a.) Screw the Piston Assembly hand-tight.
(b.) Install NEW Inside Parts Kit to correct problem and update flushometer.
(c.) Replace Piston with proper Closet Piston.
(d.) Replace with proper flushometer. Crown II and Crown flushometers are not available with flush volume higher than 1.6 gpf/6.0 Lpf.
(e.) Install Handle Repair Kit (CR-1007).

4. PROBLEM: Length of flush too long (Long Flushing) or fails to close off.

- CAUSE:** (a.) Piston is not seating properly or Bypass orifice is clogged because of foreign material, or Bypass orifice is clogged by an invisible gelatinous film from "over-treated" water.
(b.) Line pressure has dropped and is not sufficient to force Relief Valve to seat.
(c.) Main Seat is fouled with debris or is worn.

- SOLUTION:** (a.) Disassemble the working parts and wash thoroughly. **NOTE:** Size of the orifice in the Bypass is of utmost importance for the proper metering of water into the upper chamber of the valve. Do not enlarge or damage this orifice. Replace Piston if cleaning does not correct problem.
(b.) Shut off all control stops until pressure has been restored, then open them again.
(c.) Clean or replace Main Seat.

5. PROBLEM: Leaking at Handle Assembly.

- CAUSE:** (a.) The B-85 Seal may have deteriorated.
(b.) Handle Gasket has been omitted.
(c.) Valve Handle Bushing is worn.
(d.) Handle Trim Ring is reversed preventing gasket from sealing (Crown II only).

- SOLUTION:** (a.) Install new B-85 Seal. **NOTE:** The B-85 Seal will easily slide onto the Bushing if it is wet.
(b.) Install A-31 Handle Gasket or Sloan Handle Repair Kit (CR-1007).
(c.) Install Sloan Handle Repair Kit (CR-1007).
(d.) Flip Handle Trim Ring (CR-113) and reinstall Handle Assembly.

Refer to the Repair Parts and Maintenance Guide for additional Troubleshooting and Repair Part information.

If further assistance is required, please contact Sloan Technical Support at: 1-888-SLOAN-14 (1-888-756-2614)



BEST PLUMBING SPECIALTIES

Phone: (800) 448-6710
www.BestPlumbingSpecialties.com